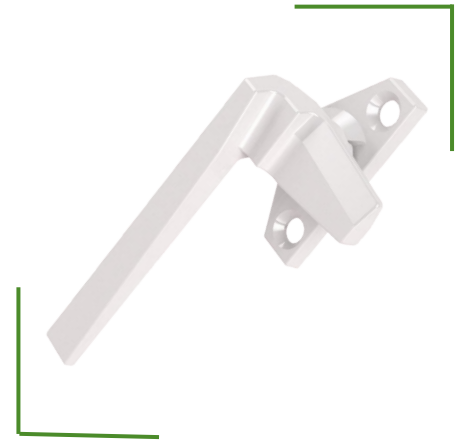


27 Series

Locks

27 Series locks feature a concealed pawl design that locks in-swinging windows from the inside. A wide range of concealed pawl and keeper designs accommodate most window styles. Pole-operated locks have a hole in the handle so users can operate locks in elevated areas. Rotating the handle 90 degrees locks or unlocks the sash. Concealed pawl locks are designed to increase both security and weather seal tightness. 27 Series locks withstand up to 150 lbs. of forced entry resistance per locking point.



PRODUCT HIGHLIGHTS

- High-strength zinc diecast construction
- Trimline and Pole handle styles available with inline and offset bases to fit any profile
- 150 lb load rating per lock point (dependent on keeper used)
- Various pawl lengths give maximum reach to help pull in and seal the vent
- Wide range of available keepers

27 Series

Locks

AVAILABLE COLORS



Black



Faux
Bronze



Chestnut
Bronze



Faux
Nickel



Aluminum



Sandstone



Sandstone



32 White



White